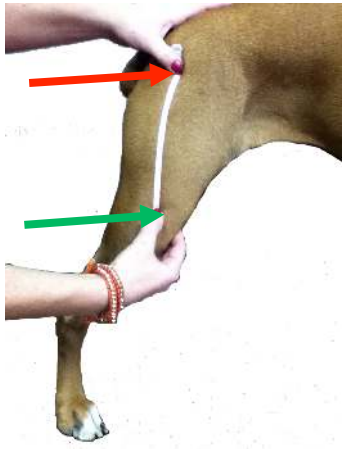


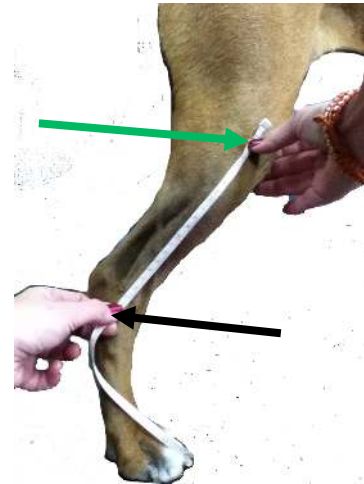
Circle: Left/Right



1. Hip to Stifle _____
 greater trochanter of femur
 apex of fibular head



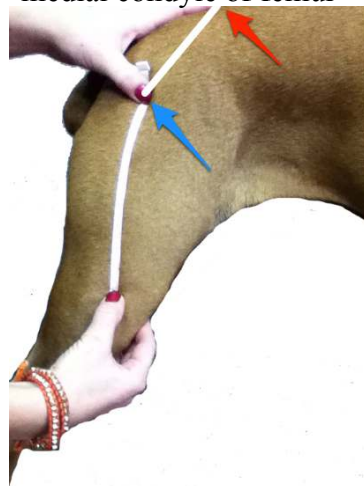
2. Groin to Stifle _____
 * femoral pulse*
 medial condyle of femur



3. Stifle to end of limb _____
 apex of fibular head
 end of residual limb



4. Thigh Circumference
 R _____ L _____

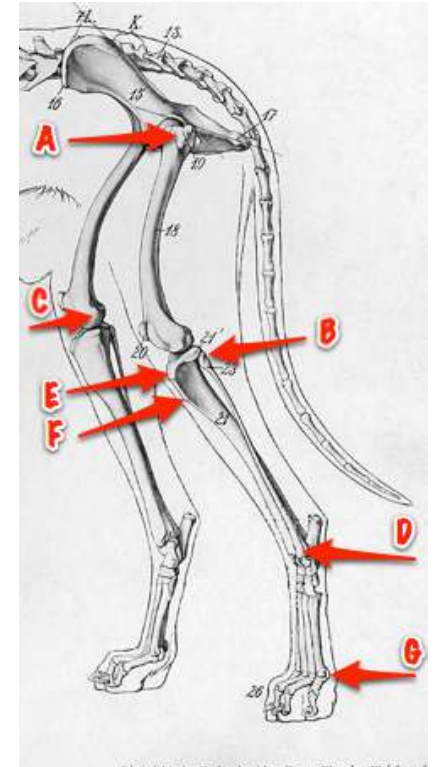


5. Greater trochanter to LS junction
 R _____ L _____
 * Greater Trochanter*
 Lumbosacral Junction



6. Greater Tibial Tuberosity to Top of Patella

7. End of limb to ground _____



- A: Greater Trochanter of Femur
- B: Fibular Head
- C: Medial Condyle of Femur
- D: Lateral Malleolus
- E; Greater Tibial Tuberosity
- F: Lesser Tibial Tuberosity
- G: 5th Metatarsal Head

7. Standing angle of tarsus of "Good" leg
